


Company Profile



ENGINEERED SOLUTIONS FOR
ALL YOUR **SWITCHBOARD** NEEDS **FAST**

5 Faigh Street, Mulgrave VIC 3170
5 Kakarra Road, West Kalgoorlie WA 6430 (ABBA HQ)

Tel : VIC 1300 327 279 | 03 8544 3300 | WA : 08 9021 5519
www.electricalswitchboards.com.au
www.abbaeng.com

 **DaRa**
Switchboards
ABBA
RENEWABLES



○
**TRUSTED BY
GLOBAL COMPANIES
FOR THEIR
SWITCHBOARDS**

Who We Are

We understand the importance of the latest technology, and currently design and manufacture switchboards for clients in the mining, petrochemical, utility, solar, industrial and commercial sectors, just to name a few.

ABOUT DARA

DaRa Switchboards commenced operations in 2010, after taking over the Australian manufacturing arm of a pioneer in electrical component and switchboard manufacturing

Dara Switchboards service clients in commercial, industrial, mining and renewable sectors with specialised switchboard solutions over the last 12 years. With in-house capabilities in sheetmetal fabrication and powder coating Dara Switchboards manufacture switchboards from a 250A distribution board to 4000A motor control centres and everything in between.

Having teams locally and globally focused on providing an exceptional customer service, the team at Dara always find ways to make things happen to their clients and was recognised as one of the fastest switchboard manufactures in Australia from quote to delivery. Having all the machinery to manufacture a switchboard under one roof the team always deliver great engineering solutions and quality switchboards within a short lead time and nothing excites them than delivering the best solutions to the market in record time.

Dara Switchboards has provided employment opportunities for hundreds of new commers to

the industry and has one of the most respected internship programs that even our competitors are choosing to recruit from. Growing great people has been one of our main strengths that has helped to create an unbeatable culture and work ethics within Dara Switchboards.

ABBA Renewables, a wholly owned subsidiary of ABBA Engineering in Kalgoorlie acquired Dara Switchboards in October 2022. ABBA Renewables investment in Dara Switchboards is another key addition to ABBA Engineering's capabilities and the commitment to helping the mining industry's transition to renewable energy apart from helping the existing and growing client base of Dara Switchboards.



ABBA Engineering

With over 20 years of professional experience, we combine our resources with local knowledge to connect with our clients and build long lasting relationships.

ABOUT ABBA

Our experienced and highly trained personnel are leading the way in sustainable engineering and welding solutions for the mining industry.

ABBA Engineering is a Western Australia-based company that has been providing the mining industry and local government with high quality services since 2001. Regardless of size or complexity, each project is treated by their team with the same attention to detail, coordination, and planning. With quick response times and short lead times they guarantee an excellent experience from start until finish with their handpicked team of experienced personnel.

From specialised equipment, maintenance, repairs, labour hire and turnkey packages along with our comprehensive welding, fabrication & engineering services, their main goal is to ensure that you are best able to achieve your strategic objectives with the least amount of disruption to your business.





Helping Australia Transition to Net Zero

We are helping our clients transition to the future with grid connected and off grid renewable energy solutions.

THE FUTURE FOR DARA POWERED BY ABBA

ABBA Groups continuous investment on Dara Switchboards manufacturing capabilities, and its people will provide the right fiscal environment and the leadership to take the company to the next level so that we can deliver complete solutions to our customers with exceptional service

We are one of the very few switchboard manufacturers that have in-house enclosure fabrication and powder coating capabilities. We have under one roof everything we need to manufacture a quality switchboard in record time. Providing an extensive space for switchboard manufacturing was a logical choice for our company, we know the value of the personalized experience.

This allows us to work closely with the customer to find a solution that meets their needs. Incorporating customer specifications - heights, space and applications - our engineering and technical team are always hard at work either designing a value proposition for our customers or building the switchboards.





Switchboard Cabinets Made In-House

We manufacture all our custom made fully welded switchboards in-house from flat sheet to the powdercoated enclosure. This helps us speed up our manufacturing process as well as help us provide customised solutions to our customers FAST.

OUR MANUFACTURING PLANT

DaRa Switchboards operates within a 2500 m2 purpose-built manufacturing facility in Mulgrave, Victoria.

Our sales, project management and manufacturing departments all operate from the same premises with also a global support team- ensuring we are a close and efficient team. Thanks to our close-knit work ethic and on-site facilities, we have the ability to design, engineer and manufacture more purpose-built switchboards FAST.



Our manufacturing facility offers a range of features - including in-house sheet metal fabrication, powder coating, assembly, electrical fitting, wiring, and testing - while our sales and engineering team is always provide continual support from start to finish.



We at DaRa believe in building and maintaining both excellent business relationships and high-quality products, which is why our process strives to exceed clients' expectations, from the initial enquiry to delivery.



Community

We teach and support each other while also creating opportunities for the community.

OUR CORE VALUE

We grow through **INNOVATION**, continuous improvement, and ongoing training



Distinctive

We are **DISTINCTIVE** and go the extra mile for our clients.



Attitude

We believe in a “can do” **ATTITUDE** & our team rise to the challenge and make things happen.



Reliable

We are **RELIABLE** and easy to do business with



Adaptable

We are **ADOPTABLE** to any situation, left field or otherwise we will always find a way to get it done



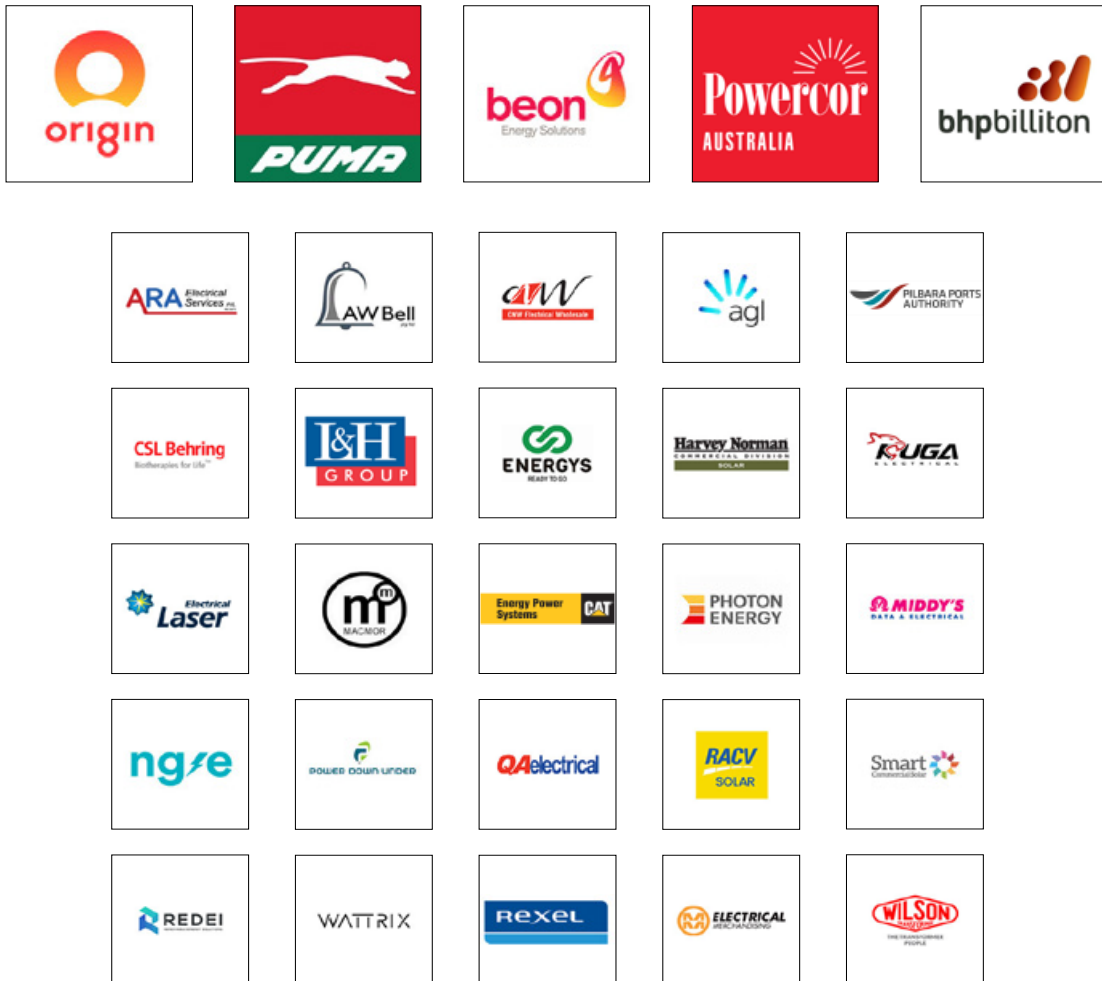
OUR CLIENTS

DARA Switchboards is able to offer our clients the products of their choice and has also broadened the scope of design solutions we can offer for demanding applications.

and commercial projects has enabled us to reach a wider client base.

We have a diverse client base and our ability to provide tailored product and services to renewable, mining, resources, ports, industrial

Although each of our clients is unique, the one thing that they have in common is the desire for strong relationships.



SERVICES STEP BY STEP



High Service Levels

We offer consistently high service levels that distinguish us in the market, and we make it our mission to deliver the best quality custom electrical switchboards on the market.



STEP 1

Our team receive specifications and line-drawn diagrams from you.



STEP 2

Our Sales & Estimation Engineers work out the optimum design - at this stage we'll work with you and advise on the best components for the application and budget.



STEP 3

Our sales & Estimation team correspond with you to confirm design and pricing.



STEP 4

Once the order has been placed, our design engineers provide detailed layout designs for schematics, labeling and equipment details.



STEP 5

After you've approved the design, we'll commence the fabrication drawing. These include both machine drawings and 2D/3D workshop drawings.



STEP 6

The switchboard is manufactured and we update progress to you regularly and accommodate any changes required to cater for any changes to the scope of works.



STEP 7

Rigorous testing is performed to ensure the switchboards comply to current AS/NZS standards. Additionally, we test the switchboard to the expectations of your project, to guarantee you'll be happy with the final product.



STEP 8

The switchboard is packed, shipped and delivered to your project destination.



We are a licenced panel board builder for industry leading modular switchboard solutions

F.T.N **CUBIC** **legrand** **ELSTEEL**

MULTI RESIDENTIAL

Our main switchboards and group metering panels are increasingly popular for multi residential applications, as showcased in 2015 by their inclusion at the new seven-story, 96-unit apartment complex Quest Rockingham in Perth and many other projects across Australia.

that our clients look for in multi residential projects.

Our tee-off boxes, light and power distribution boards completes the switchboard solutions



COMMERCIAL

Manufactured to withstand the tough Australian environment, our commercial-grade switchboards have even been used to supply reliable power to Queens Riverside, a \$100 million food, retail, cultural and entertainment hub located in Perth apart from many other projects in Australia.

manufacturer for many commercial projects from LV termination point to the tenant distribution board in Victoria as the speed to the market is what our customers look for in this space so they can complete their projects on time.

Dara switchboards is the preferred switchboard



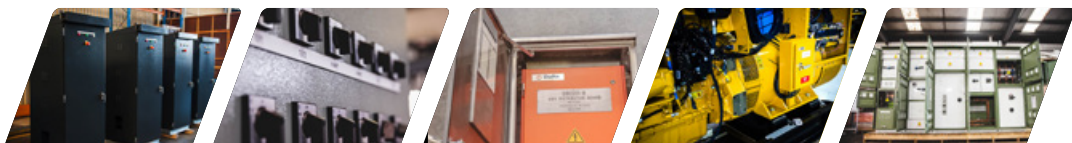
INDUSTRIAL

With partnerships and licenses from global electrical companies, DaRa industrial range switchboards are built using proprietary design verified high current switchboard systems including Eaton xEnergy, Legrand XL3, Cubic and Elsteel.

Pump control panels, Motor control centres and mechanical services switchboards (MSSBs) are designed and manufactured at DaRa to site specific needs and various mechanical services applications.

Some of these switchboard types and other industrial switchboards have been showcased in the Hitachi construction machinery company's \$100 million facility at Forestdale Business Park.

Our industrial switchboards are giving power to many industrial facilities across Australia including CSL Broadmeadows facility that count on safety, reliability and scalability for complex industrial applications.



MINING

The manufacturing facility that DaRa operates in Mulgrave has a rich history supplying to the mining industry with custom built switchboards that lasts a lifetime in harsh environmental conditions of mine sites in Western Australia.

Our mining duty grade switchboards are used in many mines in Western Australia, including BHP Billiton's Nelson Point facility as well as more recent pump control stations in Kalgoorlie for gold mines.



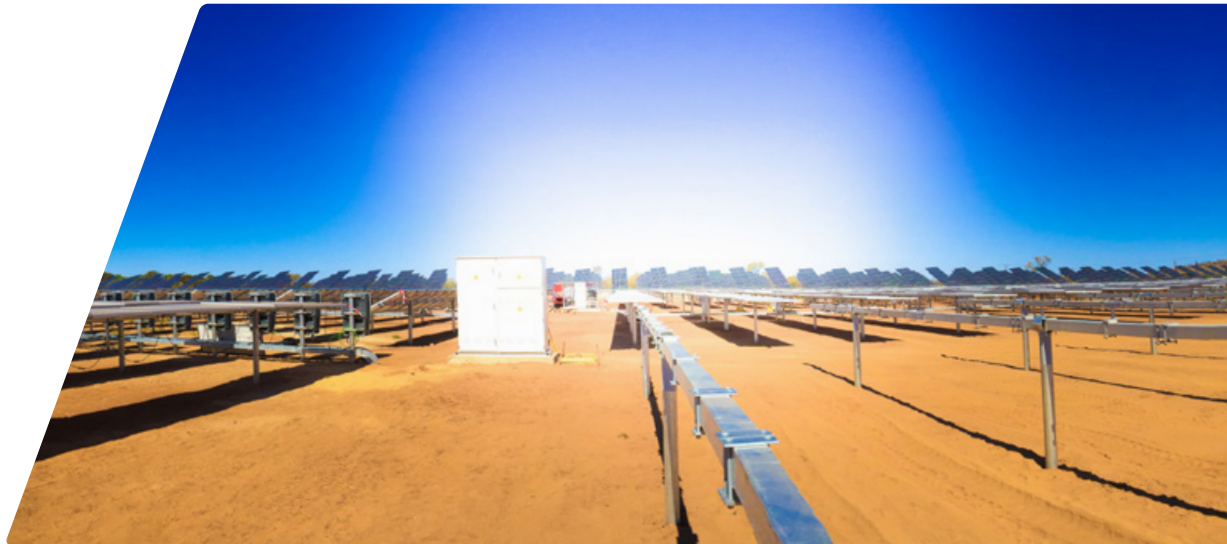
RENEWABLE ENERGY

DaRa Switchboards has also seen tremendous success in the renewable energy sector, with our switchboards being used in the construction of Tesla supercharger stations as well as in many large scale solar projects across Australia. We are one of the preferred grid protection switchboard manufacturers for companies like Origin Energy and many other large commercial solar companies across Australia.

In Alice Springs in the Northern Territory, we also assisted in supplying switchboards to the

Uterne II solar power plant, where we designed and delivered AC electrical panels for our part in the iconic project. The solar power system is projected to generate 7,230 megawatt hours (MWh) of electricity per year - the annual consumption of nearly 850 average Alice Springs households.

facility that count on safety, reliability and scalability for complex industrial applications.



PETROCHEMICAL

Motor control centres designed and manufactured at DaRa using design verified systems from global electrical companies power BP's Port Hedland Terminal, Largs North and Broome Terminal. DaRa was also chosen to manufacture the MCCs for many Puma Energy's fuel terminals in QLD and WA.



UTILITIES

Reliability, improving energy security and limiting maintenance costs are just three benefits that DaRa brings to an energy utility project. DaRa Switchboards LV protection panels are used in substations of CitiPower and Powercor, owner-operators of Australia's largest electricity networks. We have supplied various protection panels including capacitor balancing units for REFCL project and 630 to 3200A low-voltage panels for substations in the network - improving the reliability of the network while helping the utility perform essential retrofitting's and asset

replacements.

These are just a few examples of some of the work we've done that makes DaRa proud of who we are and how far we have come. When we see the success of these projects and the improvements they make on people's lives, we know we're also headed in the right direction for the future and contribute towards safe and reliable electrification of our homes, cities, business and industries.



ARARAT WIND FARM



Dara Switchboards Supplied:

- AC Changeover Panels
- Field Marshalling Panels

POWERCOR'S largest transformer in Elmhurst has now connected the Ararat wind farm to the national electricity grid generating electricity for 125,000 homes





RETROFITTING LV PANELS FOR CITIPower/POWERCOR SUBSTATIONS

CITIPower AND POWERCOR own and operate two of Australia's largest electricity networks, supplying power to almost 1.1 million customers.

utility and our highest quality switchboards are a clear winner.

Dara Switchboards is an approved LV switchboard manufacturer since 2012. Reliable network assets are a primary concern for a



Dara Switchboards Supplied:

- Main Switchboards
- Metering Panels
- HV CT/VT cabinets
- LV panels for indoor substations
- Transformer housings
- Capacitive balancing units
- Auxiliary control panels
- Automatic changeover panels



UTERNE SOLAR POWER PROJECT

ALICE SPRINGS NORTHERN TERRITORY



Dara Switchboards Supplied:

- Main Switchboard
- Sub Switchboards

UTERNE In the local Arrente language means “bright sunny day” and is the perfect name for southern hemisphere’s largest (at the time of installation) tracking solar power plant in Alice Springs.

This PV power plant 3.1Mwp. There are 9464 ultra efficient Sunpower PV modules installed in a T10 single axis tracking system.





WASTE TO ENERGY WITH STEINERT

STEINERT AUSTRALIA is a specialist in delivering separation technologies not only for upgrading coal, but also minerals and iron ore and for the removal of damaging contaminants.

As a leader in several Global markets, Steinert offers an unrivalled and extensive product range to enhance the operations of Australia's leading local and international mining projects.

Dara Switchboards is the first choice when it comes to custom made control panels used in harsh environments where Steinert's machinery get installed.



Dara Switchboards Supplied:

- **Control Panels**
- **Motor Control Panels**

PUMA ENERGY FUEL IMPORT FACILITY TOWNSVILLE



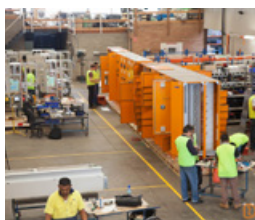
Dara Switchboards Supplied:

- **Motor Control Centres (MCC's)**

PUMA ENERGY is a global integrated midstream and downstream oil company active in over 40 countries.

Townsville is the third Australian fuel import terminal. The facility will have storage of up to 84 million litres, while the new terminal will be accessible to B-triple road trains, boosting haulage capacity.

Dara Switchboards is the proud Australian switchboard manufacturer chosen by Puma Energy to manufacture the Motor Control Centres (MCC's) that will power this facility.





MAIN SWITCHBOARDS FOR TESLA SUPERCHARGER NETWORK

TESLA MOTORS, INC. is an American automotive and energy storage company that designs, manufactures, and sells electric cars, electric vehicle power-train components, and battery products.

Tesla Motors is installing supercharger stations across Australia.

Dare Switchboards is the proud Australian switchboard manufacturer chosen to roll out their super charger stations.



Dara Switchboards Supplied:

- Main Switchboards

ONLY FLEMINGTON APARTMENTS VICTORIA

ONLY
 FLEMINGTON
 ONLY ONE ASCOT VALE ROAD

Dara Switchboards Supplied:

- **Main Switchboard**
- **Group Metering Panels**
- **Distribution Boards**

ONLY FLEMINGTON is a project by Caydon, a leading developer known for creating a vertical way of life and searching out the best locations where people want to live

a neighbourhood where everything is easy to reach.

Flemington offers access to all the best that Melbourne has to offer as a globally renowned city. Just like the rest of the city, Flemington has a rich authentic café culture and amazing hideaways and amenities. It's also





GATEWAY PLAZA LEOPOLD VICTORIA

VICINITY CENTREST took the lead in building and redeveloping Gateway Plaza Leopold.

They have ensured the new enlarged centre will have the right mix of retail and services for residents now and into the future. With the addition of Bunnings Warehouse, Gateway Plaza Leopold will be the key shopping destination on the Bellarine Peninsula.



Dara Switchboards Supplied:

- Main Switchboard
- Main Distribution Boards
- Group Metering Panels
- Tee off boxes
- Distribution Boards

NEP HUB VICTORIA



Dara Switchboards Supplied:

- **Main Switchboard**
- **Generator connection point**

NEP STUDIOS, For more than 30 years been the broadcast industry's first choice for project delivery. Their business is built on lasting relationships and they proudly work with all of Australia's commercial and subscription TV networks and leading independent production companies

NEP's new Hub – the first of their kind in Australia and the most technically advanced

facilities on this scale in the world – will enable multiple concurrent outside broadcasts.

Dara Switchboards is the proud manufacturer of Electrical Switchboards for this Cutting edge project.



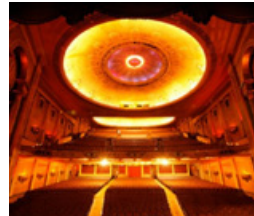


PALAIS THEATRE

NO.1 THEATRE CONCERT VENUE VICTORIA

PALAIS THEATRE IS AUSTRALIA'S No.1 theatre concert venue and No.25 internationally, alongside such luminous venues as Radio City Music Hall, Royal Albert Hall and the Beacon Theatre.

Dara Switchboards is the chosen switchboard manufacturer to provide retrofitting switchboards for the restoration works at Palais Theatre.



Dara Switchboards Supplied:

- **Distribution boards**

TRIBE HOTEL WESTERN AUSTRALIA

TRIBE HOTEL
WEST PERTH



Dara Switchboards Supplied:

- Main Switchboard
- Mechanical switchboard
- Distribution boards

TRIBE HOTEL. will house 126 luxury pre-fabricated guestt rooms over nince storeys.

This hotel was constructed using modular concepts making this one of the most efficient build.



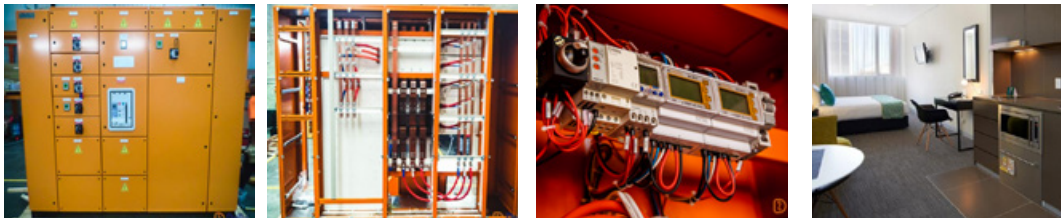


QUEST ROCKINGHAM APARTMENT WESTERN AUSTRALIA

QUEST APARTMENT HOTELS has over 150 properties in Australia, New Zealand and Fiji. They are located in central business districts, suburban and regional areas with close proximity to head offices, business centres and key tourist destinations.

coastal strip from Fremantle to Mandurah.

Quest Rockingham is your premier destination for business and leisure travel in the 60km



Dara Switchboards Supplied:

- **Main Switchboard**
- **Distribution Boards**
- **Meter Panels**
- **Apartment DB's**



SWITCHBOARDS FOR BHP BILLITON WESTERN AUSTRALIA



Dara Switchboards Supplied:

- Light & Power Distribution Boards
- Control Panels
- Temporary Power Boards
- Mechanical Switchboards

BHP, the trading entity of BHP Billiton Limited and BHP Billiton Plc and formerly known as BHP Billiton, is an Anglo-Australian multinational mining, metals and petroleum dual-listed public company head quartered in Melbourne, Victoria, Australia.

Founded in 1885 in the isolated mining town of Broken Hill, it is the world's second largest mining company.

Dara Switchboards is one of the preferred switchboard manufacturers for BHP's nelson point plant.





MAIN SWITCHBOARD FOR BP PORT HEDLAND TERMINAL

BP is one of the world's leading international oil and gas companies, providing customers with fuel for transportation, energy for heat and light, lubricants to keep engines moving, and the petrochemical products used to make everyday items as diverse as paints, clothes and packaging.

area the switchboard is made tough to perform cooler with sunshields on all sides of the board.

Due to the extreme weather conditions in the



Dara Switchboards Supplied:

- **Main Switchboard**
- **Control Panels**



THE GLASSHOUSE

LA TROBE UNIVERSITY, VICTORIA



Dara Switchboards Supplied:

- Main Switchboard
- Distribution Boards

AGRIBIO, Centre for AgriBioscience comprises some 33,000 square metres of research laboratory, glasshouses and office accommodation for 400 researchers and students. Located at La Trobe University's Melbourne campus in Bundoora.

Industries (DEPI) and La Trobe University (La Trobe).

\$2 million glasshouse facility is a joint initiative of the Victorian Government, through the Department of Environment and Primary





ELECTRICAL SWITCHBOARDS FOR VICTORIA'S LARGEST BATTERY

AUSTRALIA'S LARGEST BATTERY has arrived in Buninyong, south of Ballarat.

The 2 megawatt battery is capable of providing approximately 3,000 customers with an hour of back-up power during a power outage and is expected to reduce outage time for Buninyong residents to less than 33 minutes a year.



Dara Switchboards Supplied:

- HV CT/VT Panel
- LV Metering Switchboard

EXPORTING SWITCHBOARDS TO UNIVERSITY OF PAPUA NEW GUINEA



Dara Switchboards Supplied:

- Main Distribution Board
- Mechanical Service Switchboard
- Distribution Boards

THE UNIVERSITY OF PAPUA NEW GUINEA (UPNG) is a leading teaching and research University. It is also the first University established in Papua New Guinea since 1965 and is located in the heart of the country, the modern and growing capital city of Port Moresby.

Mechanical Service Switchboard (MSSB) and Distribution Board (DB) for the UPNG With the knowledge crafted by Dara engineers, the use of premium quality electrical components, supervised by fully qualified technicians, Dara Switchboards manufactured the UPNG Switchboards to reach global standards

Dara Switchboards proudly manufactured and exported the Main Distribution Board (MDB) ,





MAIN SWITCHBOARDS FOR NHP HEAD OFFICE, VICTORIA

NHP is an Australian leading electrical engineering company with 50 years industry excellence and 49 branches across Australia and New Zealand, at NHP it is our local footprint that helps us understand the specific project needs, no matter how big or small.

As part of the electrical supply upgrade to NHP's head office in Richmond, the main

switchboard was replaced by a more robust CUBIC modular switchboard manufactured by Dara Switchboards.

Dara Switchboards is fully accredited to build high current switchboards compliant to the new Australian switchboard standard AS/NZS 61439



Dara Switchboards Supplied:

- Main Switchboard
- Data Control Cabinet



SARICH NEUROSCIENCE RESEARCH INSTITUTE WESTERN AUSTRALIA



Dara Switchboards Supplied:

- Main Switchboard
- Distribution boards
- Metering Panels

Sarich Neuroscience Research Institute (SNRI) is a \$37.7 million project which completed in late 2016.

Its comprise four levels and house Curtin University's Neuroscience Research Laboratory, the Ear Science Institute of Australia, the McCusker Alzheimer's Research Foundation, the SCGH/UWA Neurofinity Surgical NeuroDiscovery Group, and the Western

Australian Neuroscience Research Institute.

The foundations of the Sarich Neuroscience Research Institute, which will house five of WA's premier neurological research organisation

Dara switchboards is the proud manufacturer of Electrical Switchboards for this iconic project.





NEW SEALY FACTORY WESTERN AUSTRALIA

SEALY with five manufacturing plants and over 750 employees around Australia, Sealy has achieved the highest reputation for professionalism and quality.

Dara-switchboards had the opportunity to provide custom made main switchboards to their factory extension project.



Dara Switchboards Supplied:

- **Main Switchboard**
- **Distribution Boards.**



KOMATSU WESTERN AUSTRALIA



Dara Switchboards Supplied:

- **Main Switchboard**
- **Distribution boards**

KOMATSU WAS FOUNDED IN KOMATSU CITY IN 1921. Komatsu built its first crawler tractor more than 65 years ago and has since developed the world's most extensive range of earthmoving, mining, construction and utility equipment.

Komatsu Australia has been operating in Australia for 50 years. Komatsu products are directly marketed, serviced and supported throughout Australia, New Zealand and New Caledonia by

Komatsu Australia Pty Ltd.

Dara Switchboards is the proud manufacturer of Electrical Switchboards for Komatsu DC Warehouse Facility





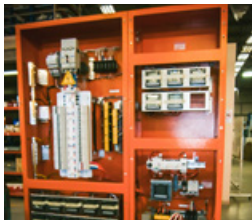
QUEENS RIVERSIDE

QUEENS RIVERSIDE WESTERN AUSTRALIA

QUEENS RIVERSIDE is part of a vision. Part of Perth's first luxurious residential quarter. The Australian Financial Review is reporting that Diploma is about to be awarded a contract to build stage two of the Queens Riverside development in Perth, valued at nearly \$100 million.

Queens Riverside is resort-style living at its finest and with a fully equipped gymnasium and outdoor heated 25m infinity pool, and easy access in and around the CBD.

Dara Switchboards is a proud manufacturer of Electrical Switchboards for part of Queens Riverside project.

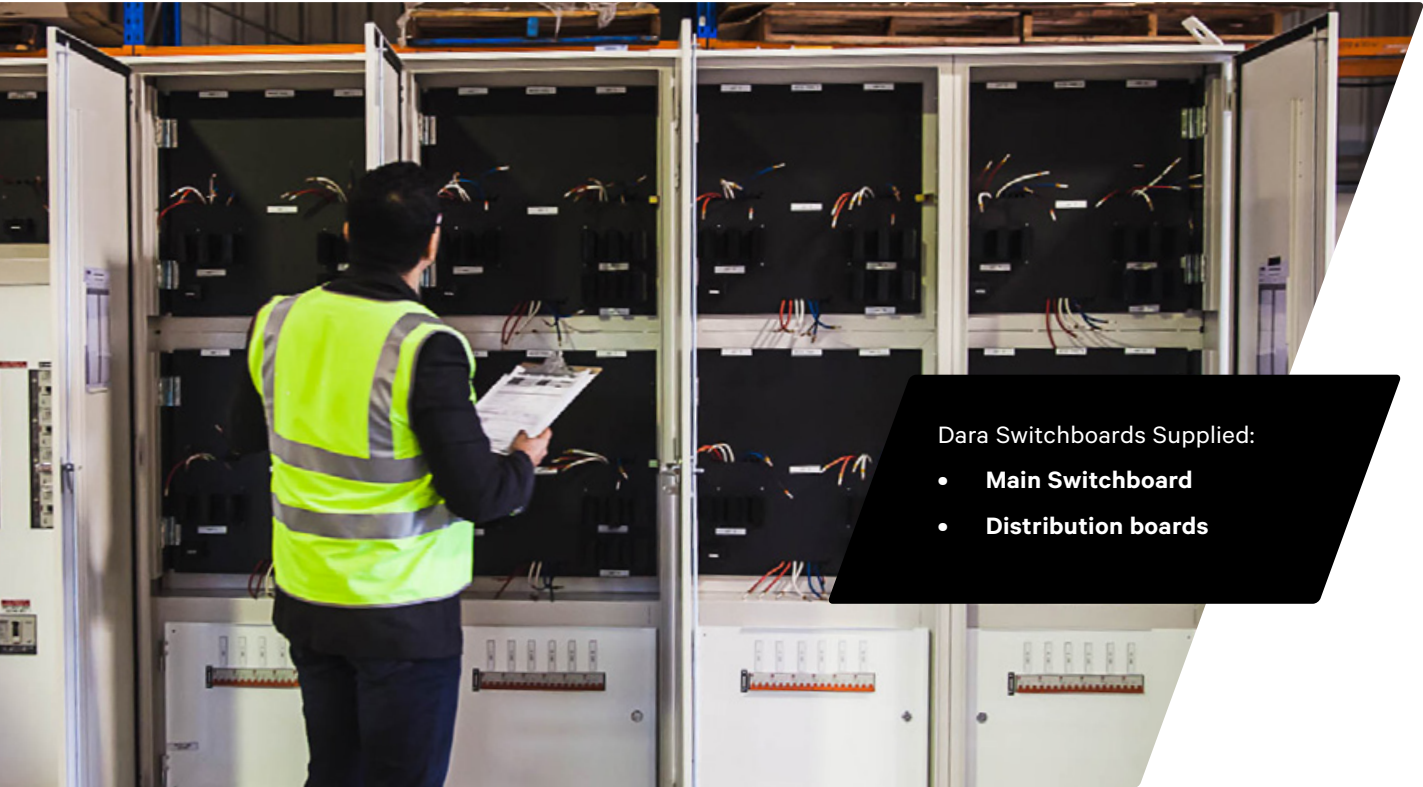


Dara Switchboards Supplied:

- **Main Switchboard**
- **Distribution Boards.**



LUXURIOUS VETROBLU APARTMENTS WESTERN AUSTRALIA



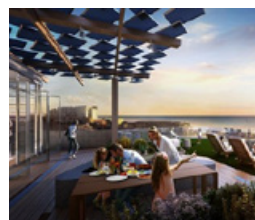
Dara Switchboards Supplied:

- Main Switchboard
- Distribution boards

VetroBlu is an exciting development consisting of luxurious, stunning ocean view of different type of bedroom apartments with spacious open plan design combined with high quality finishing throughout; each apartment at VetroBlu also comes with its own private balcony.

of Electrical Switchboards for VetroBlu Project

Dara Switchboards is the proud manufacturer





MILLS PARK COMMUNITY CENTER

BECKENHAM

PACT was awarded the contract to construct the new community facility in Beckenham. This mixed-use facility has become the cornerstone of the ambitious 24-hectare Mills Park redevelopment currently being undertaken by the City of Gosnells. The redevelopment has seen the community facility integrated within new grounds including community piazza

areas, skate park and nature play areas as well as redeveloped sporting facilities.

DARA SWITCHBOARD is the proud manufacturer of electrical switchboards for this 6 star, green star Project

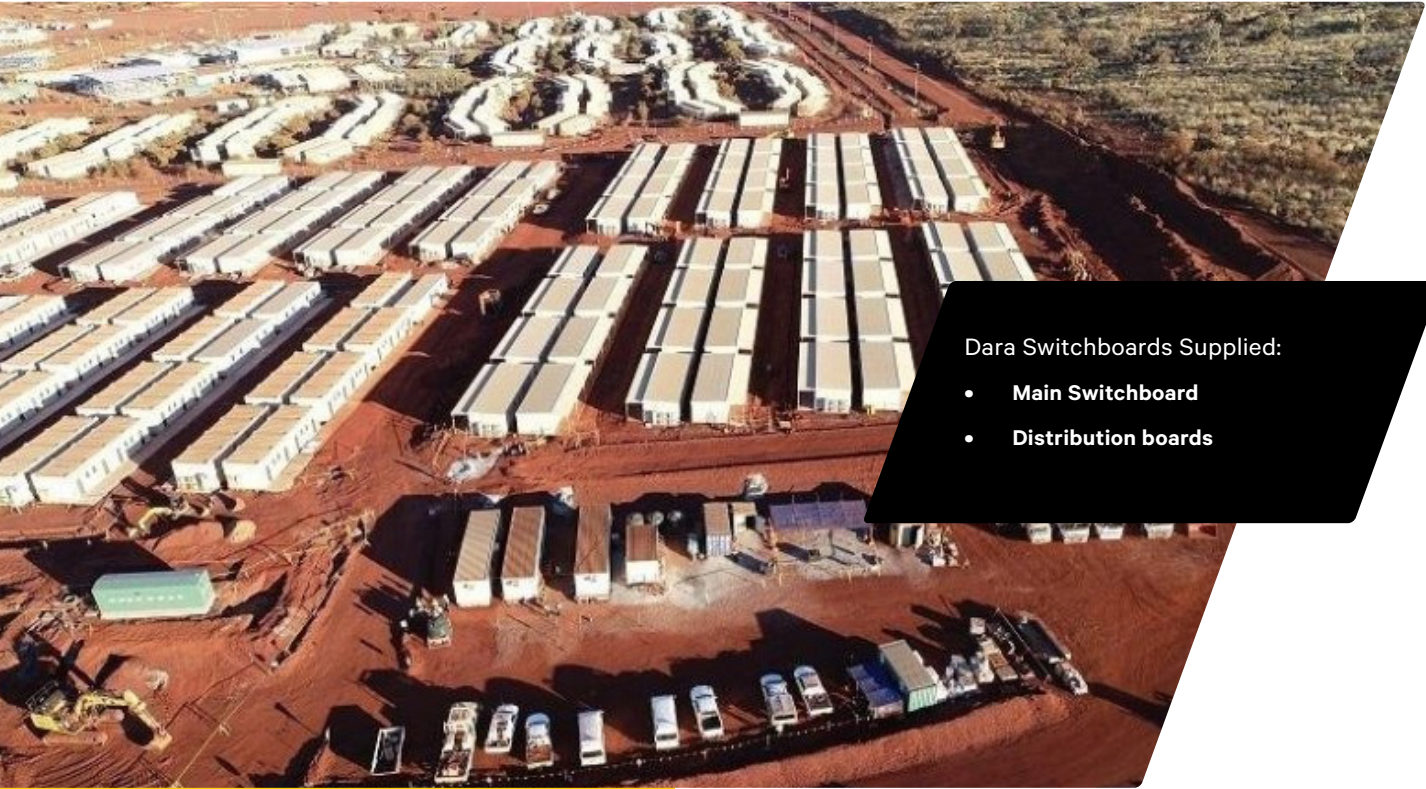


Dara Switchboards Supplied:

- **Main Switchboard**
- **Distribution Boards.**



SWITCHBOARDS FOR BHP MULLA MULLA VILLAGE EXPANSION



Dara Switchboards Supplied:

- Main Switchboard
- Distribution boards

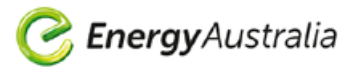
BHP, Western Australia Iron Ore will require the development of an additional ore deposit to sustain production as the Yandi mine is exhausted over the next five to ten years

To support the project BHP invested 2 billion worth of infrastructure projects including Mulla Mulla support village in Area C

Dara Switchboards is the proud Switchboard

manufacturer for this expansion project.





M.C. HERD CORIO

THE HERD GROUP is proudly based in two locations in Geelong, Victoria. M.C. Herd in Corio and Challenge Foods in Breakwater. Founded in 1951 from humble beginnings the Herd group has grown into the business that it is today, employing over 380 staff.

Dara Switchboards was chosen by Energy Australia to upgrade the main switchboard for this facility as part of introducing a large scale grid connected solar power plant.



Dara Switchboards Supplied:

- **Main Switchboard**
- **Distribution Boards.**



We at DaRa strive to deliver the best quality switchboards FAST, which is why we consider ourselves the trusted electrical switchboard manufacturer for all market segments by many in the electrical industry. Our switchboards are recognised for their attention to detail, quality design and speed of manufacturing. Our team is highly regarded as some of the most helpful in the industry providing the best experience to our customers.

Don't just take our word for it though, get in touch with us today and find out for yourself. At DaRa, we bring the power to you.

DARA SWITCHBOARDS / ABBA RENEWABLES

5 Faigh Street
Mulgrave, VIC 3170
Australia

info@dara-switchboards.com.au
1300 DARA SW (1300 327 279)
+61 3 8544 3300

ABBA ENGINEERING

5 Kakarra Road,
West Kalgoorlie WA 6430
(08) 9021 5519



**ONE STOP SHOP FOR ALL YOUR
SWITCHBOARD REQUIREMENTS**

