



# FAQ's

## Switchboards Connected with Generating Sets



# Switchboards connected with generating sets

**Q: What is the current Australian standard that covers installations with generating sets?**

- AS/NZS 3010:2005

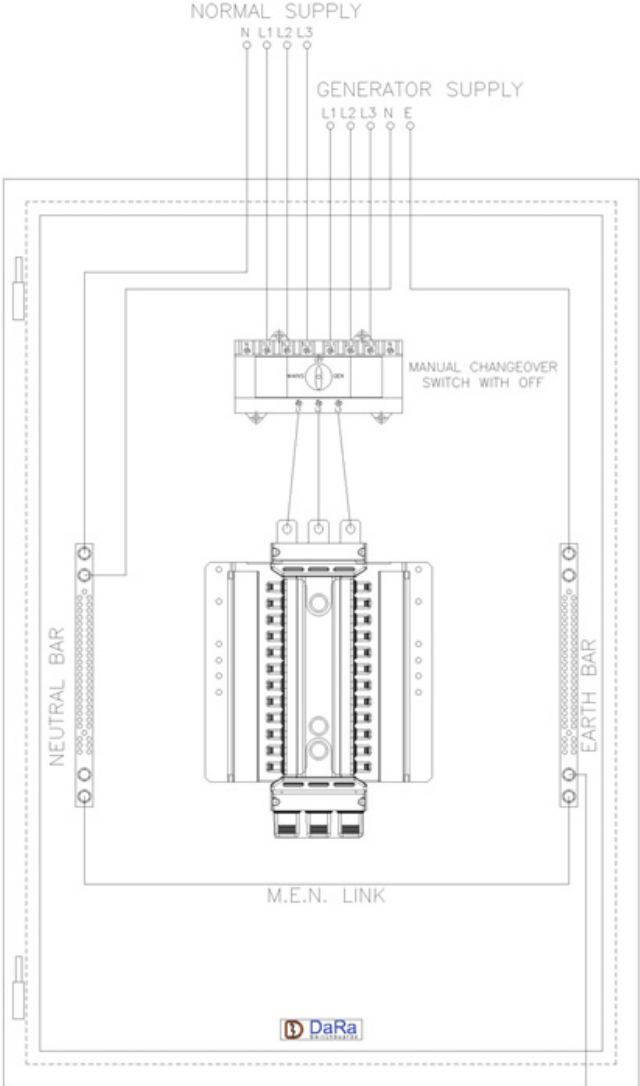
**Q: What are the main principles of connection where a changeover switch is installed?**

- Neutral and Earth connection to be made at the switchboard where the generator is connected
- The incoming neutral where the MEN link is installed shall not be switched
- Changeover switch shall interrupt one source of supply before connecting to the other source of supply
- Changeover switch shall incorporate a mechanical interlock to prevent simultaneous connection to the normal supply and generator supply
- Changeover device having an intermediate 'OFF' position may be used in place of a MAIN SWITCH. (this switch normally will be used for manual changeover only and not automatic changeover)



**Q: Do you have to switch the generator Neutral at switchboard where the MEN is connected?**

- Neutral of generator supply may be switched at the switchboard as per figure 2.3 of AS/NZS 3010:2005. However, Neutral of generator connection is not mandatory to be switched as per figure 2.2 of AS/NZS 3010:2005. This allows the use of 3pole/3pole changeover switch in switchboards as per below typical arrangement.

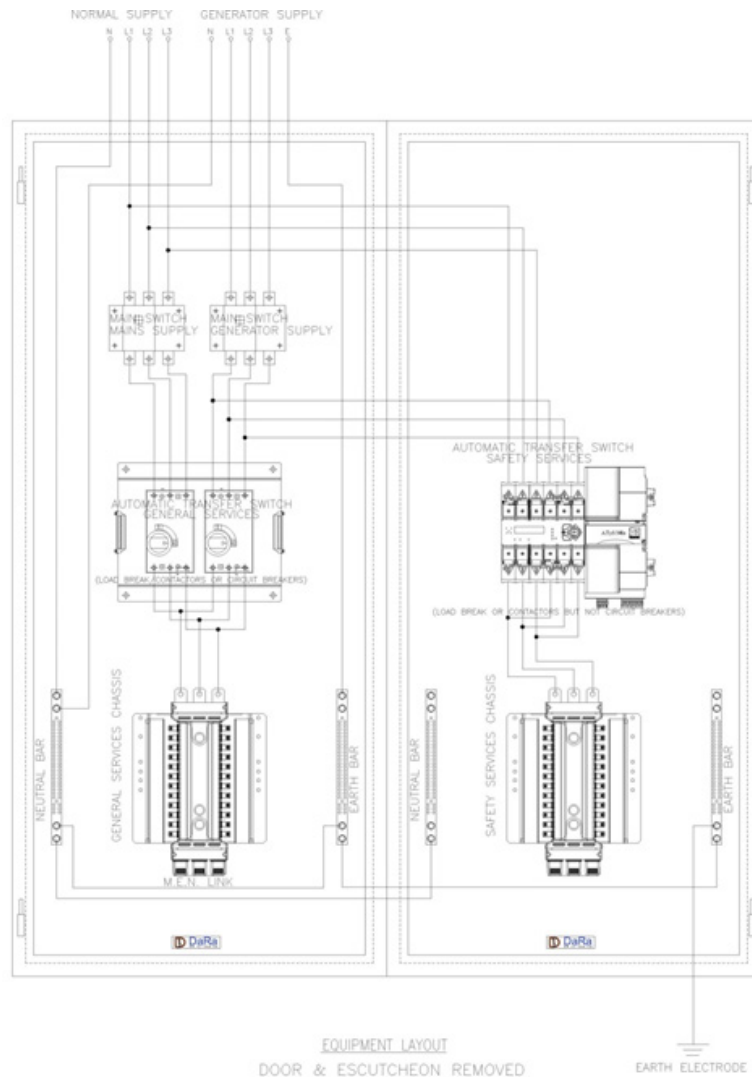


**Equipment Layout**

Doors/Covers Removed in line with figure 2.2 of AS/NZS 3010:2005

**Q: Can you use one automatic transfer switch to feed general services as well as safety services?**

- Yes, it is possible but it is not easy and it is expensive. The panel builder that No. Separate automatic transfer switches must be used and the transfer switch used for safety services section need to be load break/contactor (non auto) type but NOT circuit breaker type. Typical arrangement as follows:



**Equipment Layout**  
Doors/Covers Removed in line with figure 2.2 of AS/NZS 3010:2005

Reference: AS/NZS 3010:2005

Prepared By:

**Shanaka Unantenne** Bsc. Eng (Hons), MIEAust, MIET, MIEEE, MAICD  
Engineering Division- Dara Switchboards

**DARA SWITCHBOARDS.**

5 Faigh Street  
Mulgrave, VIC 3170  
Australia

info@dara-switchboards.com.au  
+61 3 8544 3300

